

Total Air Passes

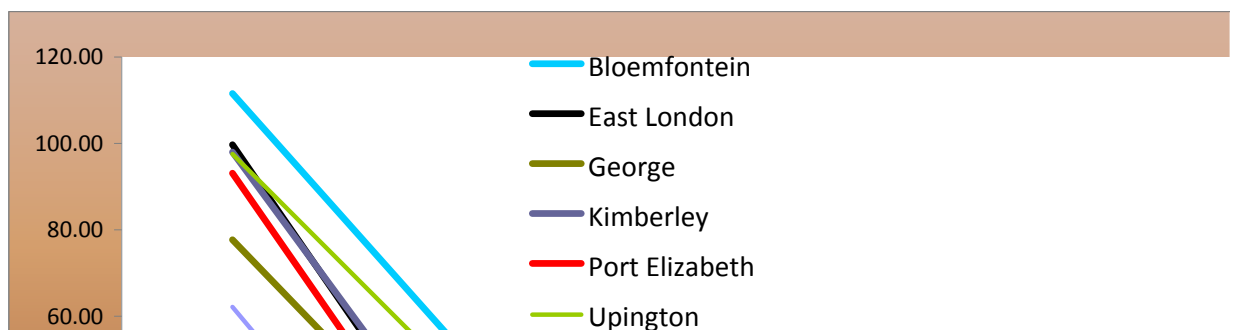
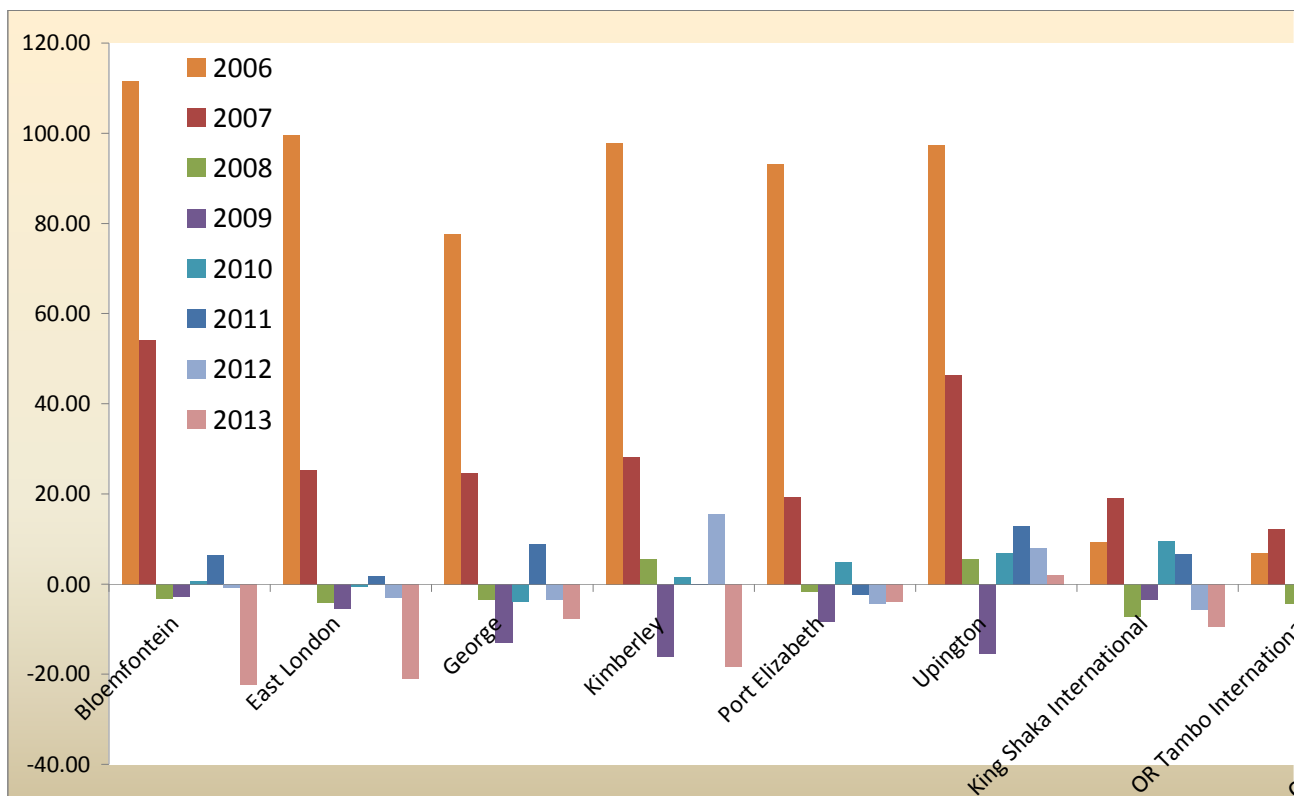
	Bloemfontein	East London	George	Kimberley	Port Elizabeth	Upington
May-10	35,700	53,984	39,173	12,154	103,113	3,693
Jun-10	36,557	50,431	39,830	9,745	127,068	3,323
Jul-10	29,729	56,718	37,608	11,008	121,861	3,528
Aug-10	36,307	57,011	43,293	12,176	117,443	4,182
Sep-10	37,489	57,874	44,237	11,679	121,689	4,292
Oct-10	40,499	62,027	48,380	12,820	124,617	4,940
Nov-10	38,950	57,219	44,249	12,852	120,499	4,794
Dec-10	27,965	58,983	57,326	7,639	123,112	3,505
Jan-11	26,028	52,911	46,877	8,229	105,536	4,212
Feb-11	33,828	52,256	43,457	10,575	108,478	4,699
Mar-11	39,814	61,088	47,819	12,657	121,264	4,530
Apr-11	34,408	55,992	49,511	9,976	120,959	3,668
May-11	36,325	54,056	43,788	10,844	106,455	4,155
Jun-11	38,695	54,160	39,716	10,931	103,216	4,236
Jul-11	37,432	59,560	45,561	11,756	116,254	3,997
Aug-11	38,386	55,340	44,737	12,253	110,844	4,646
Sep-11	42,001	59,457	44,222	13,117	112,043	4,658
Oct-11	40,457	60,688	49,753	13,320	121,154	4,510
Nov-11	40,549	57,239	46,532	13,790	118,815	4,763
Dec-11	30,073	58,994	63,318	8,491	123,316	3,908
Jan-12	29,084	50,034	52,307	8,707	102,319	3,728
Feb-12	35,272	53,520	46,958	12,629	110,459	5,279
Mar-12	39,272	62,489	49,396	14,434	119,142	4,676
Apr-12	35,231	56,292	49,518	11,600	118,434	3,865
May-12	37,132	54,413	41,352	13,893	102,740	4,324
Jun-12	35,874	53,914	38,261	12,923	103,121	5,216
Jul-12	35,007	56,771	42,623	14,057	108,948	4,552
Aug-12	35,720	57,432	42,038	14,422	102,504	4,670
Sep-12	37,011	58,982	44,838	13,946	109,411	4,782
Oct-12	39,296	61,033	47,413	14,121	115,210	5,047
Nov-12	39,296	52,495	42,390	14,261	108,861	5,425
Dec-12	28,477	45,831	58,284	8,133	116,549	3,755
Jan-13	23,689	42,367	44,250	8,459	104,800	3,941
Feb-13	31,580	45,011	41,348	12,417	106,515	5,467
Total	2,934,600	5,057,449	4,308,928	1,034,505	10,341,180	347,275

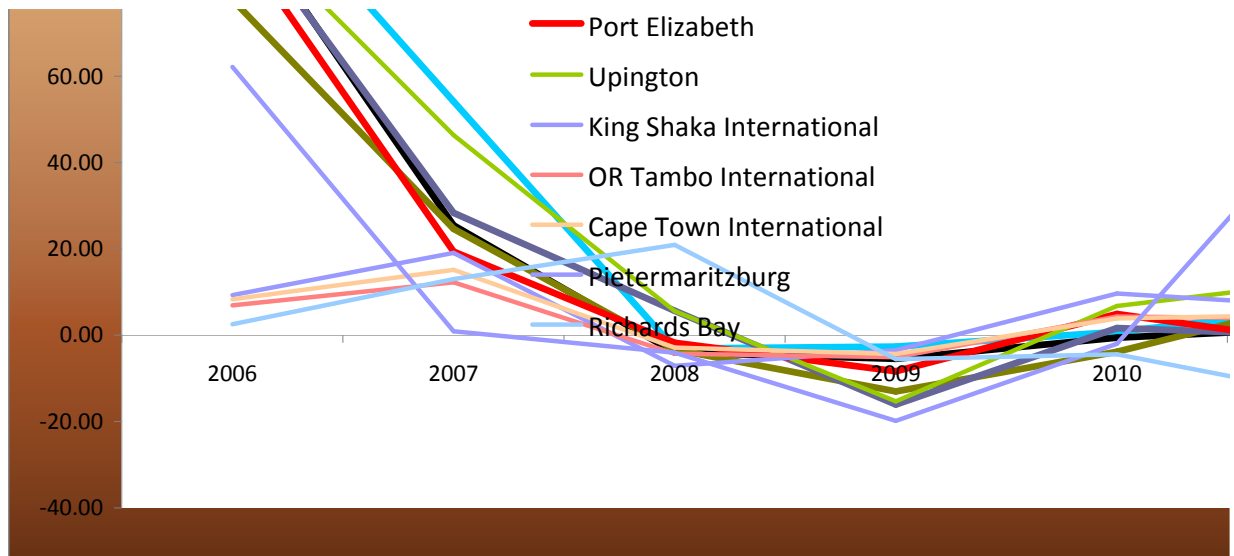
Monthly

	Bloemfontein	East London	George	Kimberley	Port Elizabeth	Upington
Average 2005	10,859	24,788	24,541	4,832	53,939	1,372
Average 2006	22,976	49,500	43,604	9,565	104,149	2,709
Average 2007	35,410	62,079	54,336	12,274	124,296	3,965
Average 2008	34,307	59,601	52,532	12,968	122,119	4,185
Average 2009	33,401	56,332	45,708	10,887	111,905	3,544

Average 2010	33,650	55,991	43,969	11,063	117,396	3,783
Average 2011	35,843	56,979	47,894	11,044	114,727	4,268
Average 2012	35,556	55,267	46,282	12,761	109,808	4,610
Average 2013	27,635	43,689	42,799	10,438	105,658	4,704
Average	29,960	51,581	44,629	10,648	107,111	3,682

Average Monthly						
	Bloemfontein	East London	George	Kimberley	Port Elizabeth	Upington
2006	111.58	99.70	77.67	97.96	93.09	97.51
2007	54.12	25.41	24.61	28.32	19.34	46.33
2008	-3.12	-3.99	-3.32	5.66	-1.75	5.56
2009	-2.64	-5.48	-12.99	-16.05	-8.36	-15.33
2010	0.74	-0.60	-3.80	1.62	4.91	6.74
2011	6.52	1.76	8.92	-0.17	-2.27	12.84
2012	-0.80	-3.00	-3.37	15.54	-4.29	8.01
2013	-22.28	-20.95	-7.52	-18.20	-3.78	2.04
Average	18.02	11.60	10.03	14.33	12.11	20.46





Per Annum						
	Bloemfontein	East London	George	Kimberley	Port Elizabeth	Upington
2005	130,308	297,455	294,496	57,981	647,269	16,461
2006	275,711	594,003	523,242	114,778	1,249,786	32,513
2007	424,924	744,949	652,031	147,285	1,491,551	47,575
2008	411,683	715,206	630,385	155,615	1,465,429	50,220
2009	400,814	675,980	548,498	130,644	1,342,861	42,522
2010	403,800	671,895	527,633	132,756	1,408,754	45,390
2011	465,961	740,724	622,617	143,578	1,491,446	55,487
2012	426,672	663,206	555,378	153,126	1,317,698	55,319
2013	55,269	87,378	85,598	20,876	211,315	9,408
Total	2,995,142	5,190,795	4,439,878	1,056,639	10,626,109	354,895

Annual Proportional Contribution						
	Bloemfontein	East London	George	Kimberley	Port Elizabeth	Upington
2005	0.46	1.06	1.05	0.21	2.31	0.06
2006	0.88	1.89	1.66	0.37	3.98	0.10
2007	1.18	2.06	1.80	0.41	4.13	0.13
2008	1.19	2.06	1.82	0.45	4.23	0.14
2009	1.22	2.06	1.67	0.40	4.08	0.13
2010	1.17	1.95	1.53	0.39	4.09	0.13
2011	1.20	1.91	1.60	0.37	3.84	0.14
2012	1.21	1.88	1.57	0.43	3.73	0.16
2013	0.98	1.55	1.52	0.37	3.76	0.17
Average	1.05	1.82	1.58	0.38	3.79	0.13
Range	0.75	1.00	0.77	0.24	1.92	0.11
Change in Contribution	0.52	0.49	0.47	0.16	1.45	0.11



anger Movements

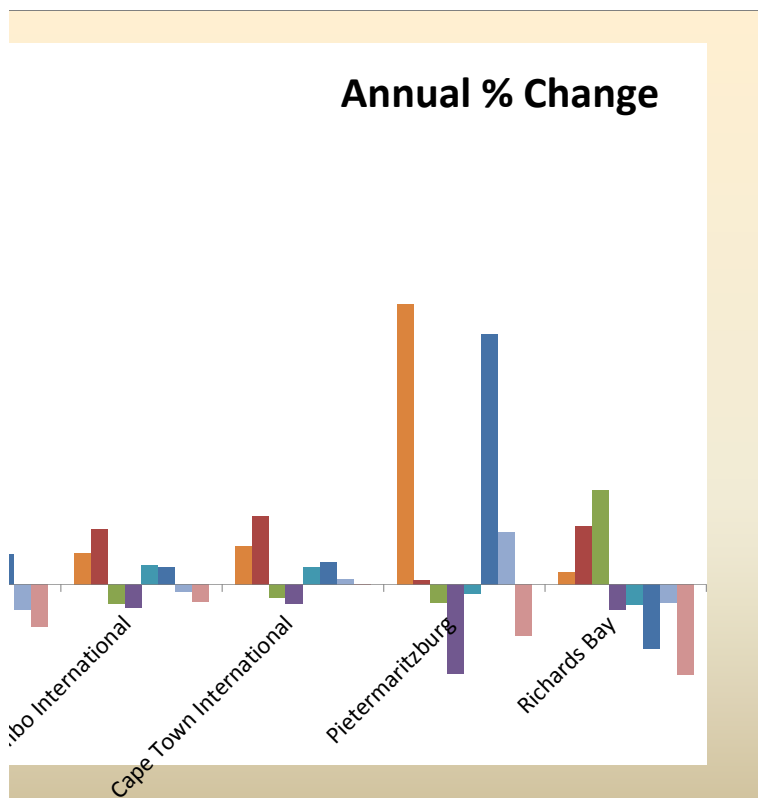
King Shaka International	OR Tambo International	Cape Town International	Pietermaritzburg	Richards Bay
385,712	1,415,752	596,701	4,714	8,195
390,958	1,606,304	634,907	4,799	8,219
396,342	1,571,751	640,722	5,850	8,236
405,934	1,606,086	636,716	6,664	8,249
414,797	1,605,985	678,168	7,009	8,269
429,150	1,680,079	713,713	6,907	8,288
406,454	1,540,792	714,598	6,894	8,299
410,535	1,600,939	676,783	3,831	8,357
397,781	1,507,654	689,035	3,900	5,273
376,166	1,373,190	687,458	5,777	6,371
423,680	1,665,879	773,929	8,658	7,203
422,985	1,590,663	708,336	7,388	6,206
405,906	1,516,484	615,991	8,913	7,529
403,318	1,449,627	618,234	10,136	7,429
449,259	1,651,390	675,602	8,668	7,406
415,435	1,614,289	651,619	8,789	8,244
419,924	1,633,639	690,890	9,289	7,918
436,447	1,719,212	754,177	9,014	7,316
420,581	1,570,063	757,303	9,092	7,165
466,749	1,702,244	813,866	6,251	5,008
389,108	1,514,082	743,912	5,625	5,478
388,380	1,436,322	738,675	8,635	6,780
422,002	1,605,986	808,104	8,566	6,805
407,655	1,579,612	742,647	8,300	5,501
386,178	1,460,882	634,812	9,194	5,711
384,959	1,457,861	609,793	9,816	6,491
403,758	1,581,624	662,114	9,204	7,609
383,966	1,599,960	657,631	9,538	7,560
390,988	1,623,505	680,027	8,849	7,371
402,379	1,672,423	734,527	9,319	7,240
381,186	1,546,199	730,498	9,388	7,111
406,665	1,603,009	762,823	6,254	7,241
358,962	1,459,691	701,881	6,260	5,140
357,701	1,536,300	714,454	8,901	5,627
35,585,125	143,692,505	62,725,018	601,039	714,252

ly Average

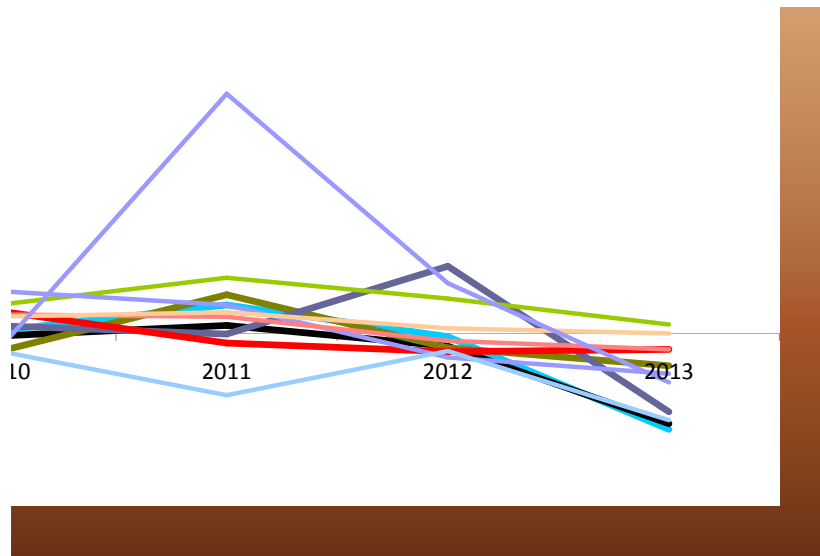
King Shaka International	OR Tambo International	Cape Town International	Pietermaritzburg	Richards Bay
307,520	1,342,648	555,740	4,000	6,495
336,016	1,435,808	602,043	6,486	6,662
399,975	1,611,358	693,112	6,545	7,526
371,560	1,541,802	673,120	6,278	9,098
358,727	1,462,893	643,665	5,034	8,591

393,332	1,526,211	668,479	4,933	8,212
419,136	1,584,252	701,017	7,670	7,033
395,602	1,556,789	708,797	8,557	6,741
358,332	1,497,995	708,168	7,581	5,384
371,133	1,506,640	661,571	6,343	7,305

Percentage Change				
King Shaka International	OR Tambo International	Cape Town International	Pietermaritzburg	Richards Bay
9.27	6.94	8.33	62.15	2.56
19.03	12.23	15.13	0.90	12.97
-7.10	-4.32	-2.88	-4.07	20.89
-3.45	-5.12	-4.38	-19.81	-5.57
9.65	4.33	3.86	-2.01	-4.41
6.56	3.80	4.87	55.47	-14.36
-5.61	-1.73	1.11	11.57	-4.14
-9.42	-3.78	-0.09	-11.42	-20.14
2.36	1.54	3.24	11.60	-1.53



Annual % Change

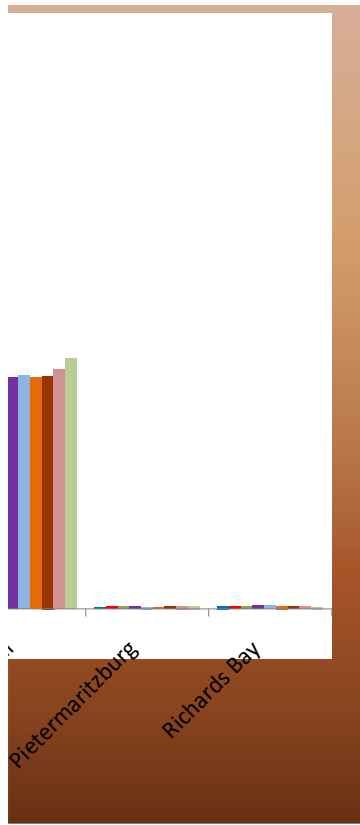


num Total

King Shaka International	OR Tambo International	Cape Town International	Pietermaritzburg	Richards Bay
3,690,243	16,111,781	6,668,875	48,000	77,944
4,032,193	17,229,694	7,224,521	77,832	79,942
4,799,702	19,336,300	8,317,341	78,536	90,308
4,458,715	18,501,628	8,077,435	75,337	109,173
4,304,729	17,554,721	7,723,975	60,411	103,091
4,719,986	18,314,537	8,021,752	59,199	98,548
5,448,766	20,595,273	9,113,223	99,706	91,425
4,747,224	18,681,465	8,505,563	102,688	80,898
716,663	2,995,991	1,416,335	15,161	10,767
36,918,221	149,321,389	65,069,020	616,870	742,095

ional Contribution

King Shaka International	OR Tambo International	Cape Town International	Pietermaritzburg	Richards Bay
13.16	57.46	23.78	0.17	0.28
12.83	54.81	22.98	0.25	0.25
13.28	53.52	23.02	0.22	0.25
12.87	53.39	23.31	0.22	0.32
13.09	53.38	23.49	0.18	0.31
13.72	53.23	23.32	0.17	0.29
14.02	52.99	23.45	0.26	0.24
13.45	52.94	24.10	0.29	0.23
12.74	53.26	25.18	0.27	0.19
13.24	53.89	23.63	0.23	0.26
1.28	4.52	2.20	0.12	0.12
-0.42	-4.19	1.40	0.10	-0.09



TOTAL

2,658,891
2,912,141
2,883,353
2,934,061
2,991,488
3,131,420
2,955,600
2,978,975
2,847,436
2,702,255
3,166,521
3,010,092
2,810,446
2,739,698
3,066,885
2,964,582
3,037,158
3,216,048
3,045,892
3,282,218
2,904,384
2,842,909
3,140,872
3,018,655
2,750,631
2,718,229
2,926,267
2,915,441
2,979,710
3,108,008
2,937,110
3,047,021
2,759,440
2,865,321

267,341,877

TOTAL

2,336,734
2,619,518
3,010,875
2,887,569
2,740,687

2,867,021

2,989,862

2,940,770

2,812,380

2,800,602



TOTAL

12.10

14.94

-4.10

-5.09

4.61

4.28

-1.64

-4.37

2.59

